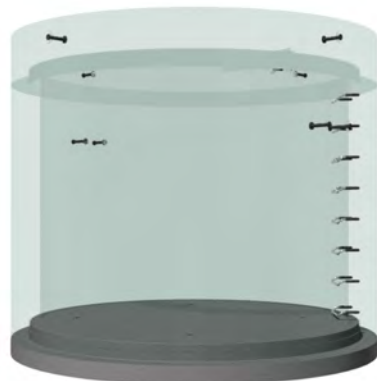
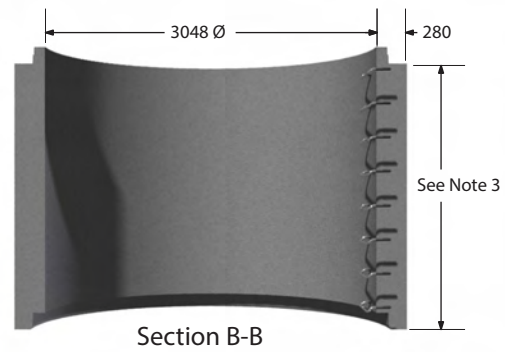
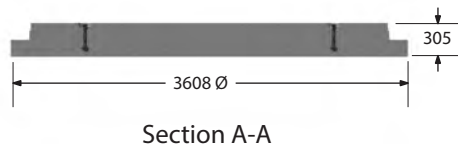
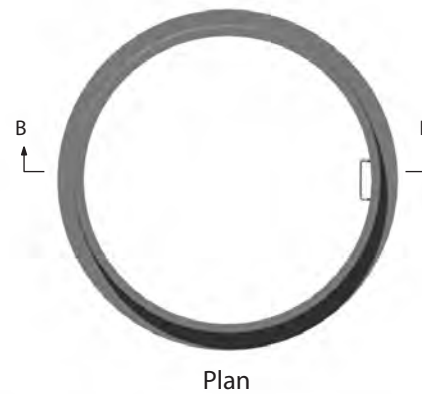
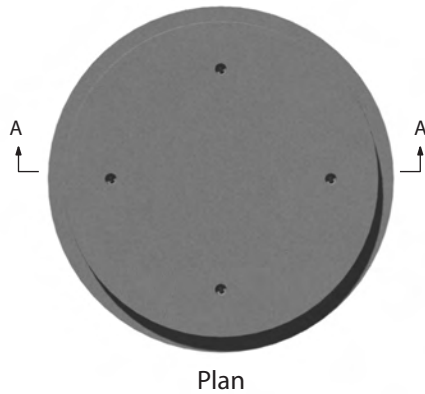




**M CON Products Inc.**  
 2150 Richardson Side Road  
 Carp, ON K0A 1L0  
 Tel: 1-800-267-5515  
 Email: SalesCarp@mconproducts.com

**M CON Pipe & Products Inc.**  
 2691 Greenfield Road  
 Ayr, ON N0B 1E0  
 Tel: 1-866-537-3338  
 Email: SalesAyr@mconproducts.com



**Base Slab**  
 (mass - 6944 kg)



**Riser**  
 (mass - 7400 kg/m)

## Maintenance Hole 3000mm Riser and Base Slab

### Notes

1. Manufactured in accordance with OPSD 701.071.
2. See page 43 for maximum pipe size and alignment angles.
3. Available riser section heights - 305, 610, 914, 1219, 1524, 1829, and 2440.
4. Maintenance hole steps (circular hollow aluminum) as per OPSD 405.010.
5. All dimensions are in millimeters unless otherwise shown.

